

**Title:** Princt Qualified Dell Systems: Release of Revision 22.05.05 of the Deployment USB Stick for Dell Systems PowerEdge T150, T350, R350, T550, R450, R640 and T640; Optiplex XE4 and XE3; Precision 3660 XE Tower and 3650 Tower

**Key words:**

Princt Qualified Dell Systems, Dell Deployment

**Objective:**

The version **v.22.05.05** of the **Deployment USB Stick** supporting **Windows 10 Pro x64 v21H2** and **Windows Server 2019 LTSC** Standard Edition is available for Princt 2020 (and higher). It is the successor for the Deployment version v22.02.02. It contains Microsoft Windows Security Updates and Dell drivers up to **March 2022**. The Deployment Wizard of this USB flash drive image supports the following Princt qualified Dell systems:

**HEIDELBERG DELL EMC Servers (Windows Server 2019 LTSC Standard Edition):**

- PowerEdge T150-S12 (PP.222.0398)
- PowerEdge T350-S20 (PP.222.0396)
- PowerEdge R350-R20 (PP.222.0397)
- PowerEdge T550-S45 (PP.222.0394)
- PowerEdge R450-R45 (PP.222.0395)

**HEIDELBERG DELL Workstations (Windows 10 Pro x64 v21H2):**

- Precision T3660-C11 (PP.222.0432) (coming soon)
- Optiplex XE4-C34 (PP.222.0431) (coming soon)
- Precision T3650-C10 (PP.222.0392)
- Optiplex XE3-C33 (PP.222.0296)

**HEIDELBERG DELL EMC Wallscreen Servers (Windows Server 2019 LTSC Standard Edition):**

Terminal server for PDF Inspection and Wallscreen application:

- PowerEdge T350-WT7 (PP.222.0399)
- PowerEdge R350-WR7 (PP.222.0400)

**HEIDELBERG DELL EMC systems for Digital Print workflows**

(Windows Server 2019 LTSC Standard Edition):

- PowerEdge R450-PR68 (PP.222.0430) (coming soon)
- PowerEdge T550-PR69 (PP.222.0429) (coming soon)
- PowerEdge R640-PR66 (PP.222.0401)
- PowerEdge T640-PR67 (PP.222.0402)

A table containing the as of today actual Princt qualified Dell systems is available in the document [Dell ProductList\\_220518.pdf](#). The document will be refreshed as soon as new platforms are released.

Most qualified Dell servers now belong to the latest Dell PowerEdge 15G family, and all Servers come with a Windows Server 2022 Standard Edition license covering the installed cores (at least 2 CPU sockets and 16 CPU cores must be licensed according to Microsoft) and 5 Windows Server 2022 User CALs (may be used for connections to Windows Server 2022 and older Microsoft server versions) to ensure that our customers get the latest operating system licenses bundled with the hardware. Nevertheless, the current Deployment uses the downgrade right to install Windows Server 2019 LTSC Standard Edition.

All Dell systems come with Dell's "3 years Keep your hard drive" option to avoid privacy issues caused by sending back hard drives with sensitive data in case of a warranty exchange.

Some **PowerEdge 15G rack servers do not support optical drives anymore**; for your convenience, you will find an external USB DVD-ROM drive in the scope of delivery for these servers. Please be aware that this external drive will be dropped within the next server generation, please make sure that you are equipped with such an external USB drive for future installations (e.g., to ensure access to the OS media in case of a disaster recovery).

All default configurations do not include a monitor. These Dell Systems can be ordered via DELL HD Premier Page aka Global Portal. If desired, a monitor can be selected from the available monitor options on the DELL HD Premier Page. Please be aware that some monitors are not equipped with a VGA connector and therefore cannot be connected to a server. All actual monitors come with a Display Port and/or HDMI connector – therefore our systems do not contain a DP-to-DVI adapter cable any longer.

### **Prerequisites:**

The Deployment utility can only be used for HEIDELBERG qualified Prinect DELL / DELL EMC systems with the defined configuration.

The standard number of hard disks must not be undercut when the server is ordered from Dell via the Global Portal. However, a larger number of hard disks is not critical. The deployment wizard will be cancelled if the software detects less than the required hard disks.

Note that Deployment Wizard is for use by Heidelberg service staff only. **For legal reasons, do not leave the Deployment flash drive at the customer site!**

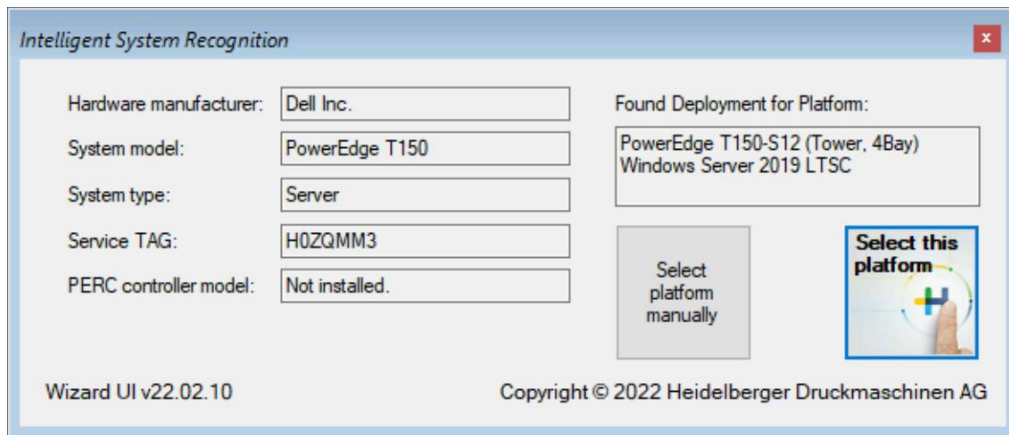
**It is only legal to use the Deployment USB-Stick if you have a valid DELL OEM Microsoft license for the operation system you want to deploy!** Please check the windows license sticker on the DELL EMC **servers**. In addition, all server systems come bundled with five user CALs (Client Access Licenses); the license certificate must be part of the delivery.

Note: The client's Windows OEM license key is "burned" into the system's UEFI firmware, deploying a workstation without this build-in license will lead to an unlicensed system that cannot be activated!

### **Important changes:**

Some Dell-internal issues caused a delay in the availability of our new systems, that's why this version of the **Deployment Wizard** must **support two generations of workstations and digital printing workflow servers**.

Starting with the actual deployment v.22.05.05, the Deployment Wizard now starts the “**Intelligent System Recognition**” after booting, i.e., it analyzes the system and selects the deployment that matches the detected platform:



Please refer to the document [Princt-DELL\\_Specs\\_v22.05.05.pdf](#) for a more detailed description.

Starting with Deployment v.22.02.02, the generic “**Heidelberg Service**” (**HDService**) user **account will not be created** any longer by the Princt OS Deployment Wizard. This user account has been **discontinued** due to security reasons.

Some **PowerEdge 15G rack servers do not support optical drives anymore**; for your convenience, you will find an external USB DVD-ROM drive in the scope of delivery for these servers. Please be aware that this external drive will be dropped within the next server generation, please make sure that you are equipped with such a drive for future installations (e.g., to ensure access to the OS media in case of a disaster recovery).

Starting with Deployment v.21.07.07, a system-wide security policy enforcing **strong passwords** that **comply with the Windows Password Complexity rules** and with **at least 8 characters** are enforced due to security reasons.

### **Implementation:**

There are several important changes in the new USB Deployment Wizard for Windows 10 and Windows Server 2019, please refer to the document [Princt-DELL\\_Specs\\_v22.05.05.pdf](#) for a detailed description. The following part is extracted from this document:

#### **Deployment requirements:**

- The USB stick must be (bootable) FAT32 formatted (NTFS file system is not supported)
- The USB stick must be booted in UEFI boot mode (BIOS-booted USB stick will fail)
- The target system’s EFI firmware must be set to UEFI boot mode before booting the deployment USB stick (BIOS boot mode is not supported)
- A USB flash drive with at least 32 GB capacity is required (Hint: The HP USB Storage format Tool v2.2.3 can FAT32-format USB drives larger than 32GB).

To keep your system safe and up to date, it is recommended that you install the latest Dell firmware and driver updates and run Windows Update to install the latest OS security patches.

Please note that most Windows settings are on a per-user base and needs to be defined manually for every user. **The deployed Windows OS images do not contain system-wide privacy policy settings**; only Windows update and preview build installation settings have been pre-defined by policies. That's why it is required that you define the system-wide privacy according to your customer's guidelines!

After an operating system upgrade (aka "Feature Update" installation), you must check all settings and set them back to the Prinect recommended defaults: This includes disabling hibernation support (especially for Suprasetter systems), memory pool settings, privacy settings, app settings etc. On Windows 10 systems, this might happen twice a year...

### **Known Deployment Issues**

- **Suprasetters** are supported by Windows 10 resp. Server 2019 if the latest container software version is used. For VxWorks-based Suprasetters, please refer to the documentation or ask the according support team. Please check if your Container software is compatible with the OS before starting the installation!
- To install the **Suprasetter Container software**, please be aware that a **complex password is required for the user that will be created** during installation.
- Please note that all actual client system CPUs do not support Microsoft operating systems older than Windows 10 – a downgrade to older operating systems is not possible!
- The **Windows 10 Dell "Recovery Media" cannot be used** to do a disaster recovery (aka fresh install) and therefore is not useful for customers relying on this function. Please use Microsoft's "Media Creation Tool" to create an installation medium or download the Dell installation medium (see [this DELL link for further information](#)), if desired.
- The **T3660-C11** as well as its predecessor T3650-C10 support only **PCIe** Speedway interface sets with GIEB PCIe Speedway interface boards (the actual **GIEB-2** and the old GIEB-PCI-E).  
Hint: Unlike the T3650-C10, the T3660-C11 does not offer a PCI slot anymore.
- The new, Windows 11-based **Heidelberg Client (HCv6) does not support** the package **HC5T\_USB\_Stick\_Prep\_v223\_ENG** to prepare the Deployment USB flash drive anymore. Please use a different (non-HCv6) Computer and use the tool HPUSBFW.EXE to format a bootable USB flash drive.

### **Background/hints:**

If you are using a **fast** USB3 flash drive, the typical deployment time until the first reboot is about 5-25 minutes, depending on the system. Only the Wallscreen/PDFI server deployment will take longer (typically more than 40 minutes) because the RAID1 mirror will be created in parallel, reducing the disk performance.