

Prinect Update Training 2021

PDF Toolbox



Agenda

1. System requirements for PDF Toolbox 2021
2. What's new?
3. Help and tutorials





Explanation of Icons:



- Useful information



- Princt feature: Improvement can also be found in Cockpit



- Packaging Feature



- Digital Printing

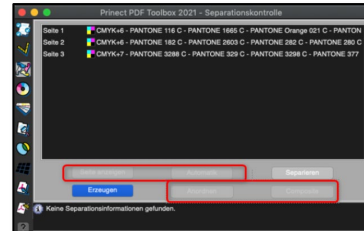
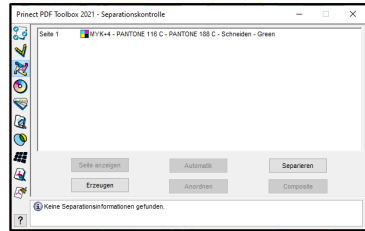


Requirements for PDF Toolbox 2021

Supported Acrobat Versions

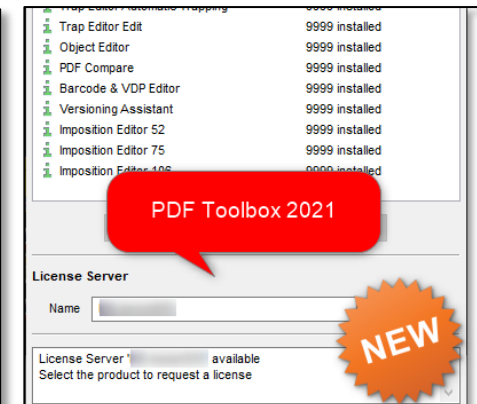
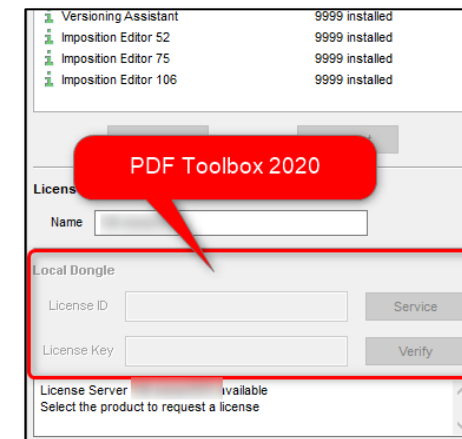
PDF Toolbox 2021 PC	Acrobat 10, 11, DC
PDF Toolbox 2021 Mac	Acrobat 10, 11, DC

Mind: Mac Acrobat "Black UI" is hard to detect. Please choose bright UI.
Windows Acrobat dark UI: Mac Acrobat dark UI:



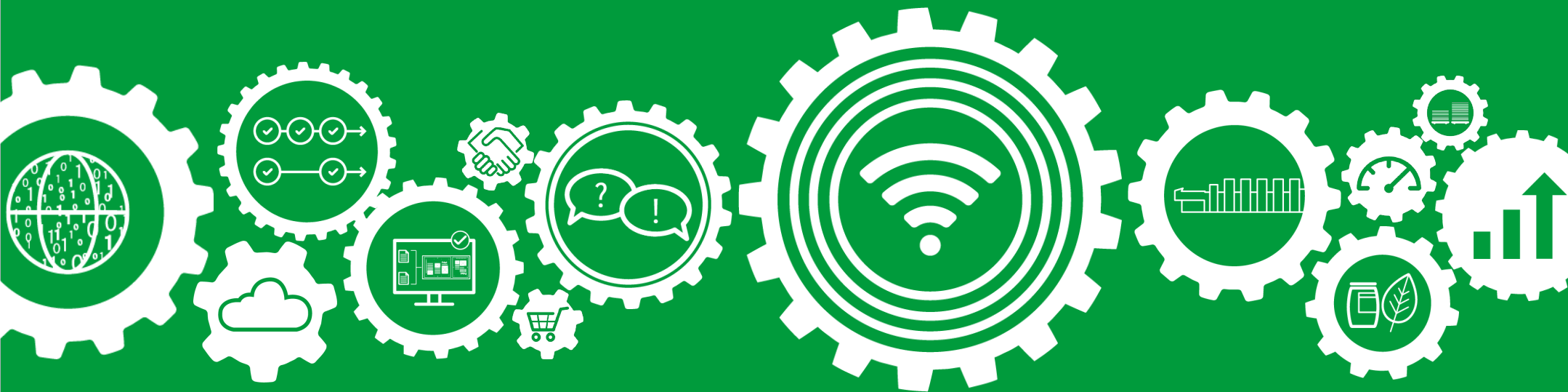
New: Licensing with local dongle is no longer supported

Motivation: Switching to license server licensing





What's new? - CFF2 Improvements





CFF2 Improvements

New in CFF2 import: set a default for a line type
Support CFF2 file name ending “cff”



Motivation: Improvement for packaging customers – Masterworks Laser Die Cutter (not tested)

A CFF2 file can contain different linetypes such as cutting, creasing or perforating. So far, all lines have been shown in green after import. In the PDF Toolbox 2021, the lines are now shown in color.

In addition to the 4 standards for cutting, creasing, perforating and cut creasing, you can create your own standards for the name and number of the line. The line can then be exported again in the Spot Color Editor as CFF2 for various uses.
(Previously all lines were output as "cutting")

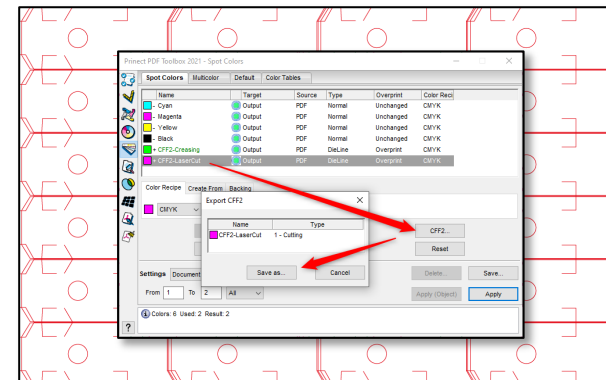
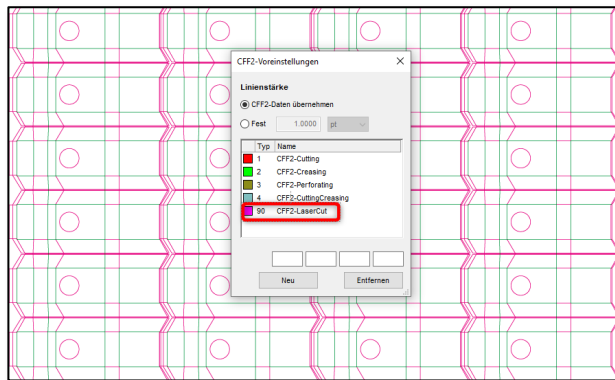


CFF2 Improvements

New in CFF2 import: set a default for a line type
Support name ending “cff”



CFF2 Workflow: Import & Export



CFF2 Improvements - Support of Masterworks Workflow



New in CFF2 import: set a default for a line type
Support name ending “cff”



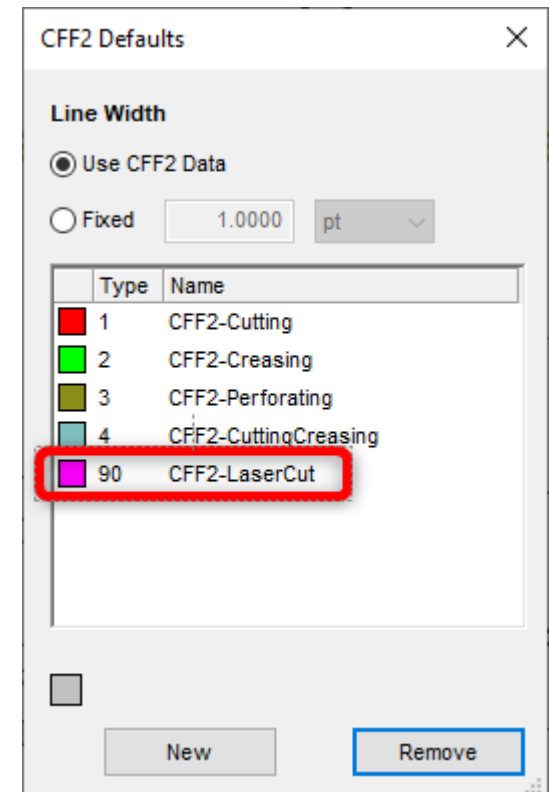
Example:

In the CF2 file are lines #99 that should be named “laser” and colored in yellow at import and the line should be exported in a CF2 file for cutting

- Open the “CFF2 defaults” in ->PlugIns ->Prinect 2021 ->CFF2 defaults and set line “90” with name “Cff2-LaserCut”
- Drag & Drop the CFF2 file to Acrobat
- Export the “90 Cff2-Laser” in Spot Colors to get a new CF2 file

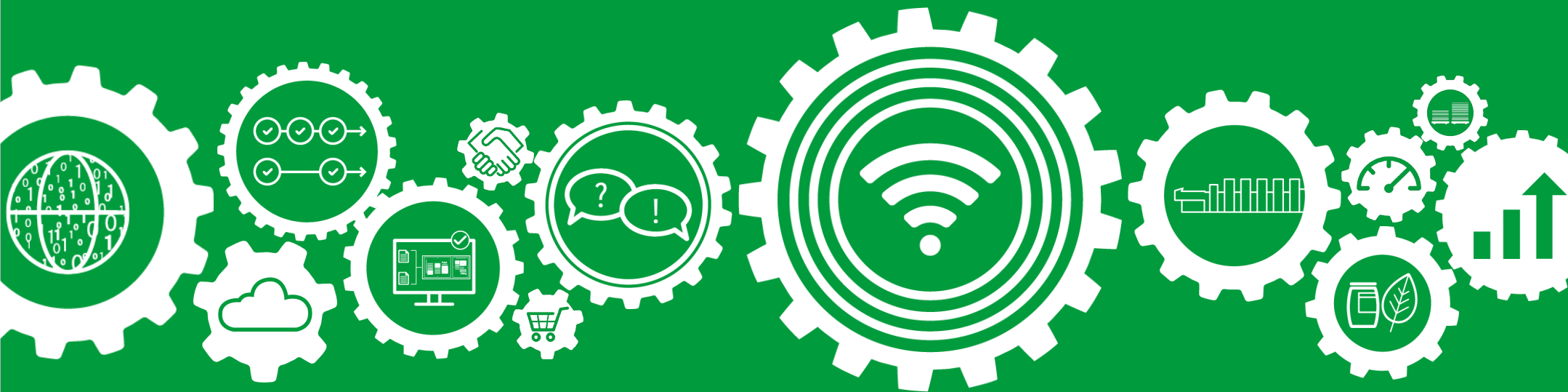


- The maximum amount of lines in a CFF2 are 99
- 1-4 is reserved for Cutting, Creasing, Perforating and Cutting Creasing and cannot be changed
- Since PDF Toolbox 2017 you can drag & drop a CFF2 file in Acrobat with a valid license for *Assemble pages*. The CFF2 file is converted to PDF.
- Name ending “cff” is supported as well as “cf2”
- Settings for Export in Spot Color Editor are remembered after Acrobat restart





What's new— PDF Assistant





PDF Assistant - Preflighter

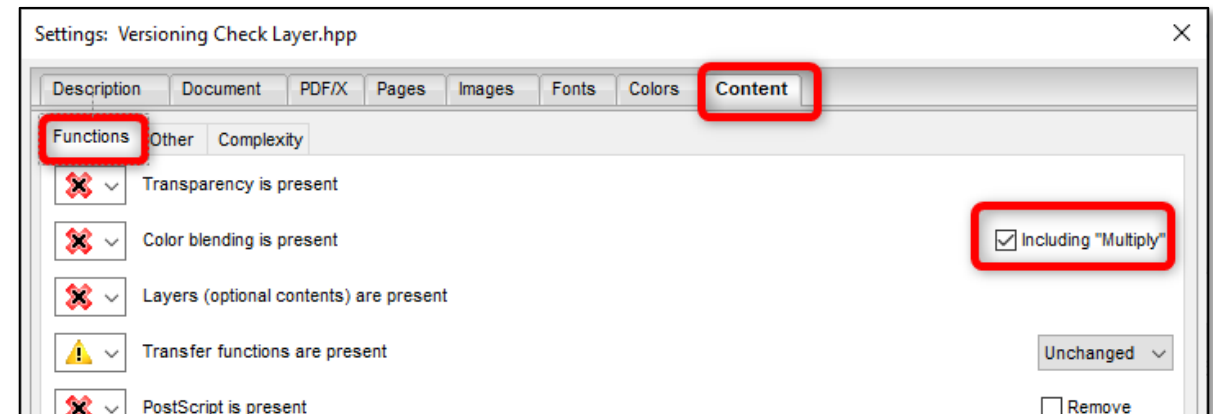
New checkpoint: omit Blendmode “multiply”



Motivation: Improvement of feature (also in 2020.10)

A Transparency can contain a blend mode that says how a transparency should be flattened. There are 27 different blend modes in Photoshop, some are critical and some are less critical in affecting colors. They can change the color of individual separations and may lead to unexpected results after color management. Blend modes might affecting colors are “hue”, “saturation”, “color” and “luminosity”.

The commonly used and harmless blend mode “multiply” which normally causes no trouble can now be in- or excluded at this check.





PDF Assistant – Geometry Control

New Feature: Optional scaling of images when adding bleed

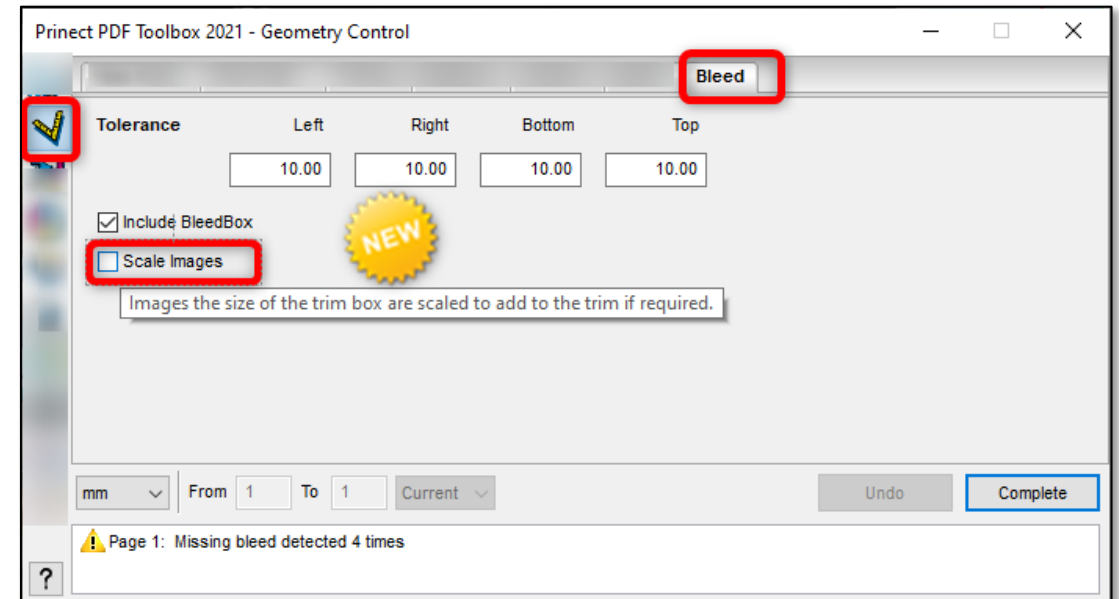


Motivation: Improvement of feature (also in 2020.10)

Usually missing bleed is added by repeating and scaling a specific amount of pixels.
However, if the entire PDF consists of only one image, it has been completely scaled to prevent strange effects.

With the new checkbox, you can now decide for yourself whether:

- scale the entire image or
- a scaled frame (as in non-full page images) is adding the missing bleed

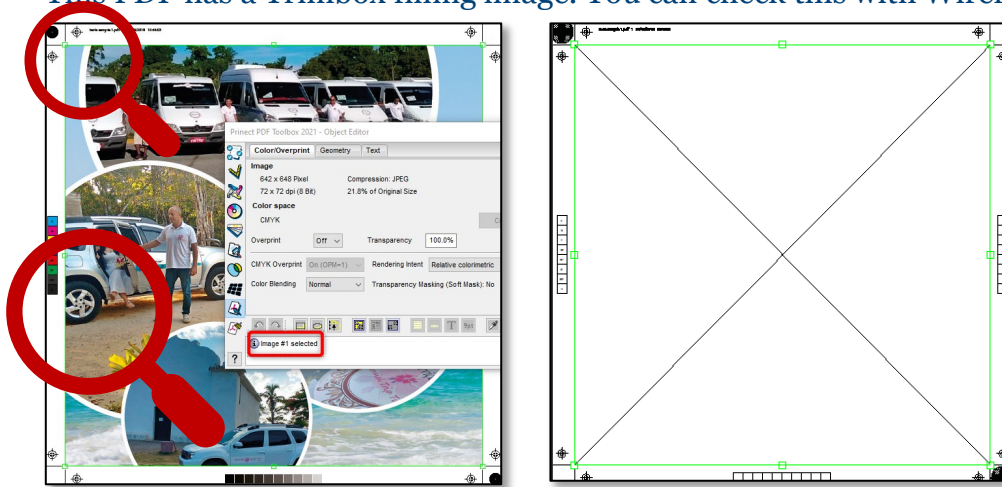




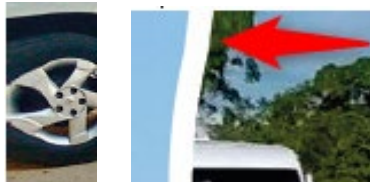
PDF Assistant – Geometry Control

Example:

This PDF has a Trimbox filling image. You can check this with Wireframe View or Object Editor:



When bleed is added you see effects like this:



To avoid these effects add missing bleed by choosing “Scale images”.



PDF Assistant - Optimization

New Tab: “Optimization”



Motivation: New tab for PDF Optimization with settings known from Prepare step in Cockpit.

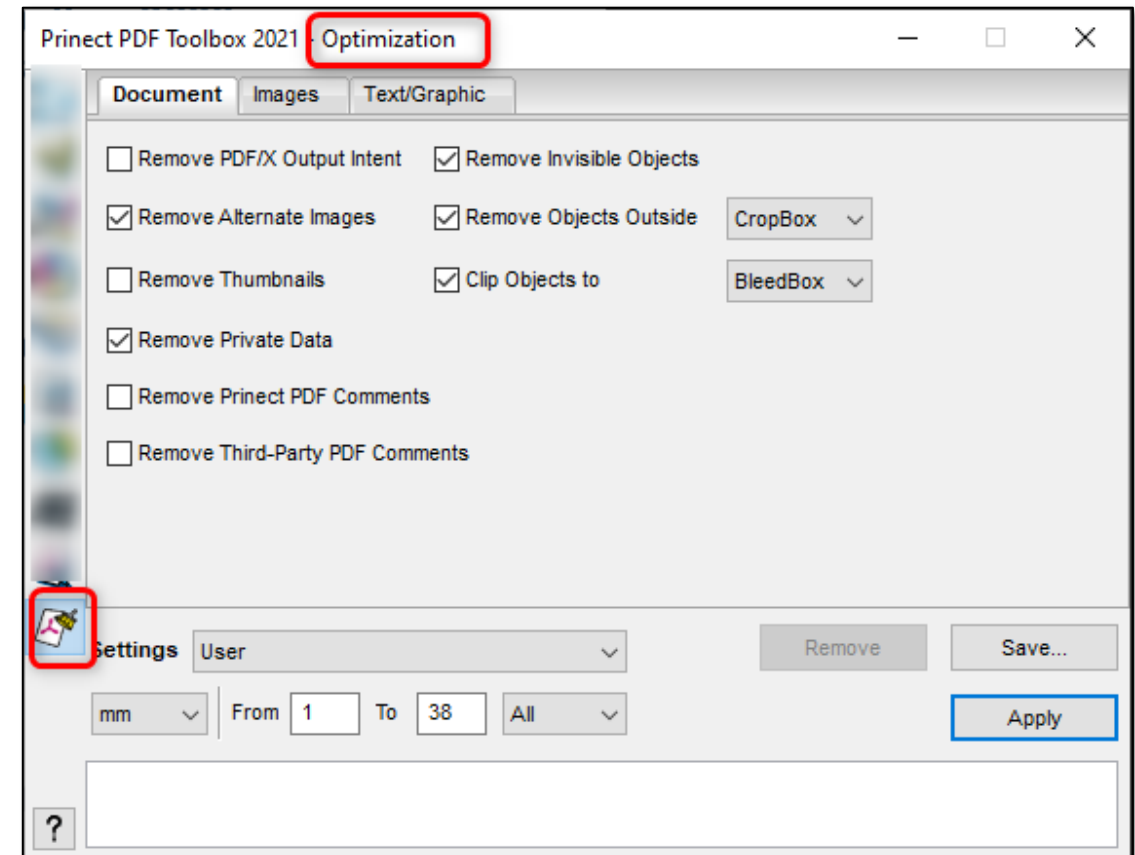
The tab is available with a valid license for “Object Editor”.

Same functionality as within Prepare like:

- Down sampling and compressing images and bitmaps
- Removing meta data, annotations, alternate images, PDF/X-Output-Intent
- Removing invisible (e.g. covered) content objects or objects outside CropBox
- Converting text to graphic
- Shrinking graphics or converting small graphics to bitmaps

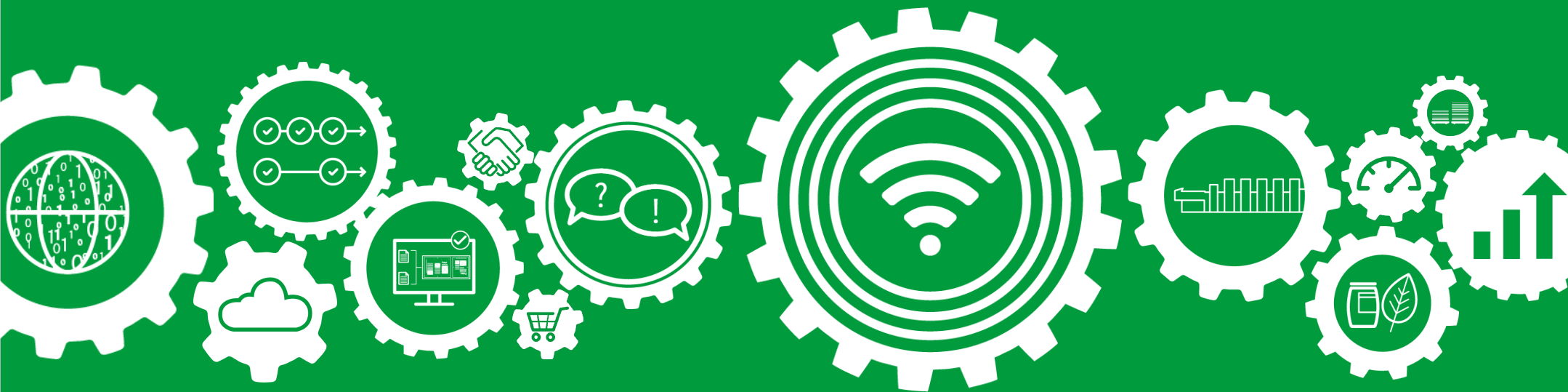


- Can be applied to multiple documents using “+Shift” click on Apply button
- To minimize file size always use “save as” in Acrobat.
“Save” is saving incrementally





What's new? – Versioning Assistant





Versioning Assistant

New Checkbox: “set CMYK to knockout”

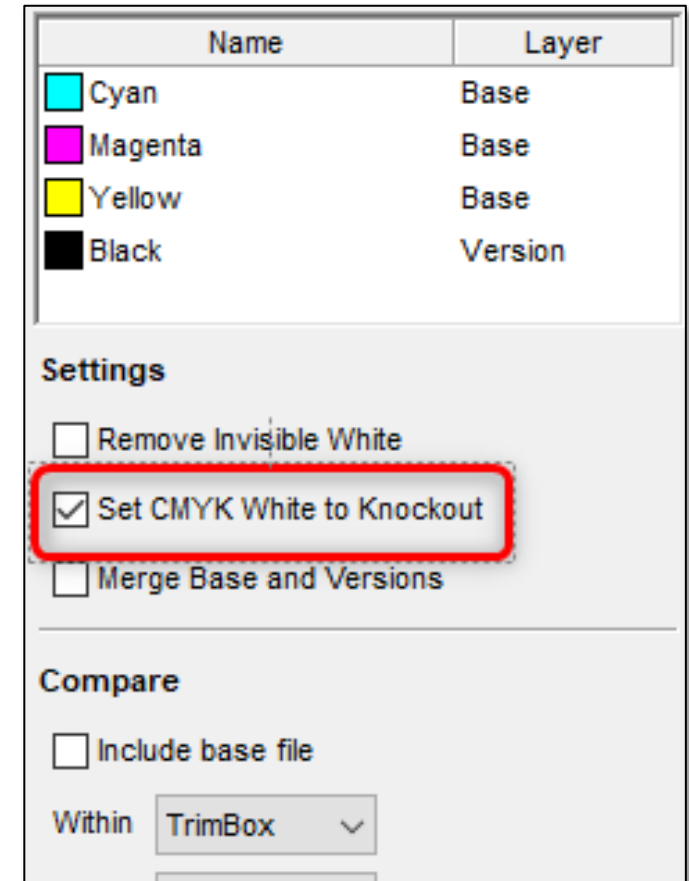
Motivation: Ease of use in error correction

However, when working with versioning, you should keep the original contents of a file and not change it before a check. If you need to make corrections, you can now do so under visual control in the Versioning Assistant. Previously, the “Set CMYK white to knockout” option was only available in the Color Carver in Prepare or Color Editor. This function sets graphics or text in CMYK to knockout.

The Versioning Assistant finds and marks all elements that are created in 0% version color. Whether the elements are knockout, overprinting or completely invisible. (Overprinting with OPM mode=1)

The user can decide under visual control whether this should be corrected.

→ Works with text and graphics





Versioning Assistant

Example: Invisible Text

In this example, texts and graphics are set in white overprinting and thus usually not visible.

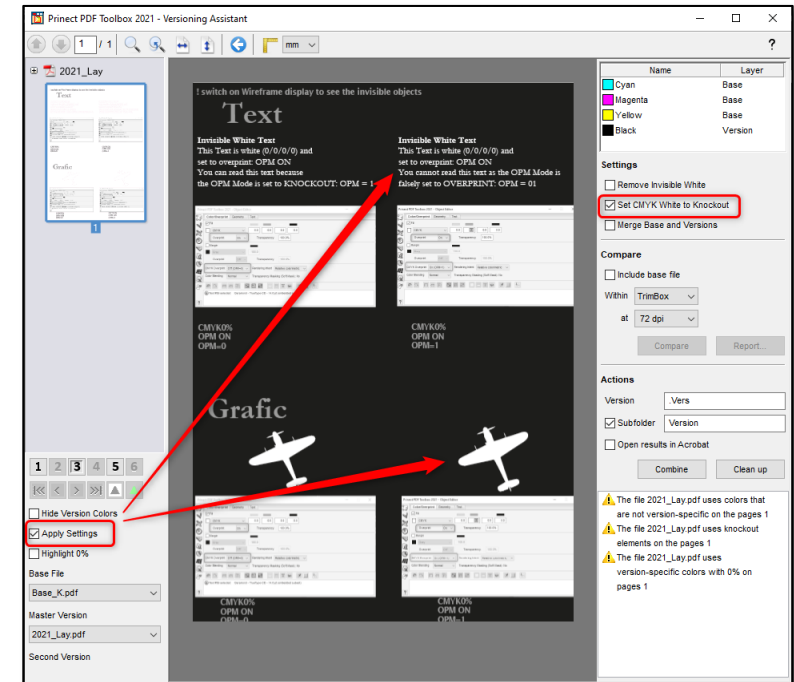
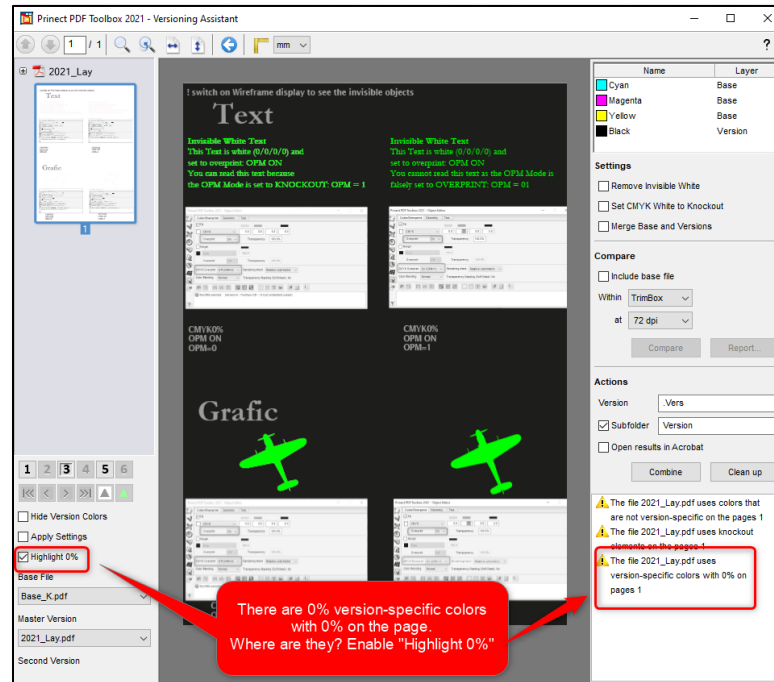
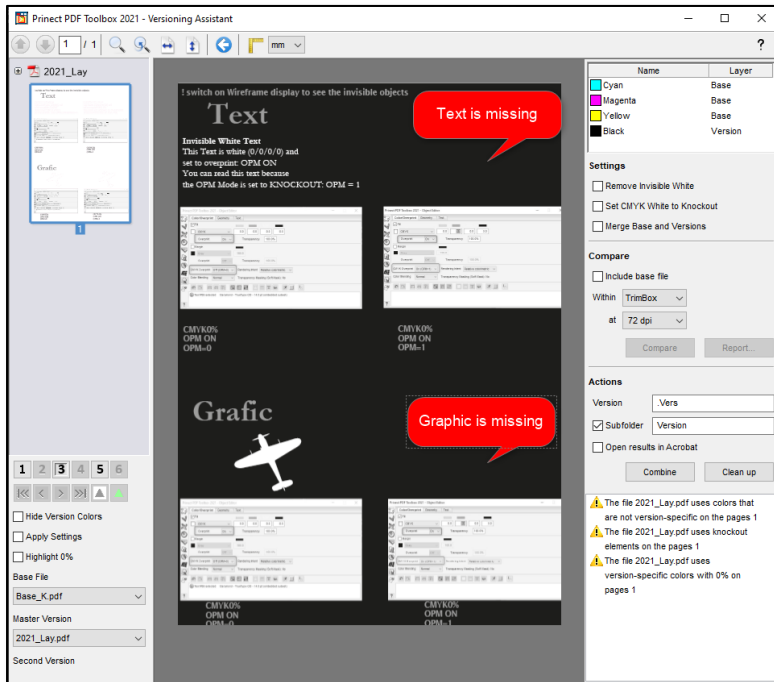
On the left is selected for text and graphics OPM Mode=1. This means that in black separation these elements are knocking out. Text and graphics can be seen.

On the right, however, the OPM Mode=0 and the text is completely invisible.

The question that arises is: *Should the invisible text be visible or not?* You have to decide that!

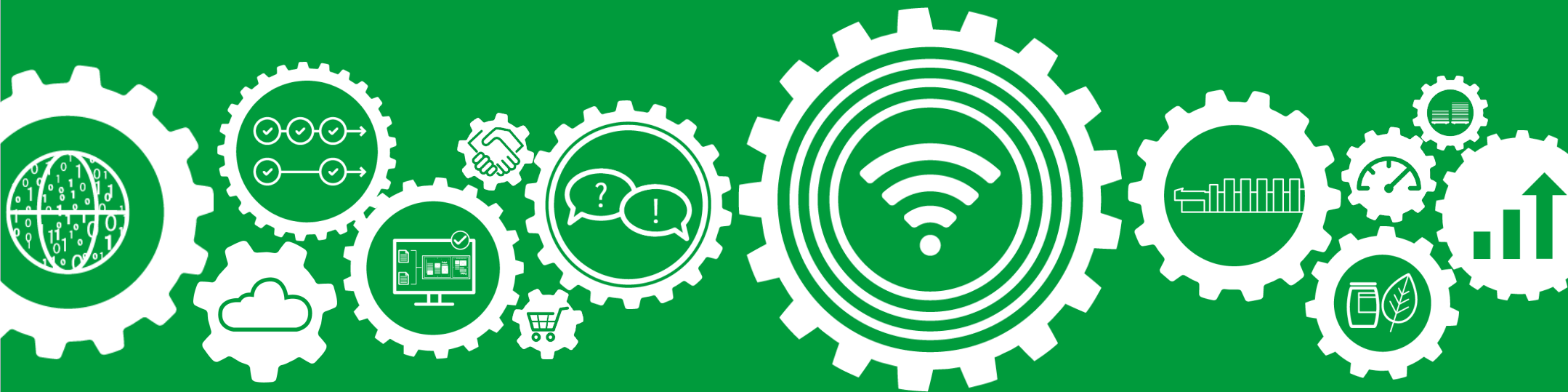
You can make these items visible in the Versioning Assistant by activating the checkbox "highlight 0%" Versioning Color.

You can then decide under visual control whether you use "Set CMYK White to knockout" to make the invisible text visible.





What's new? – Barcode & VDP Editor



Barcode Editor - pharmaceutical packaging

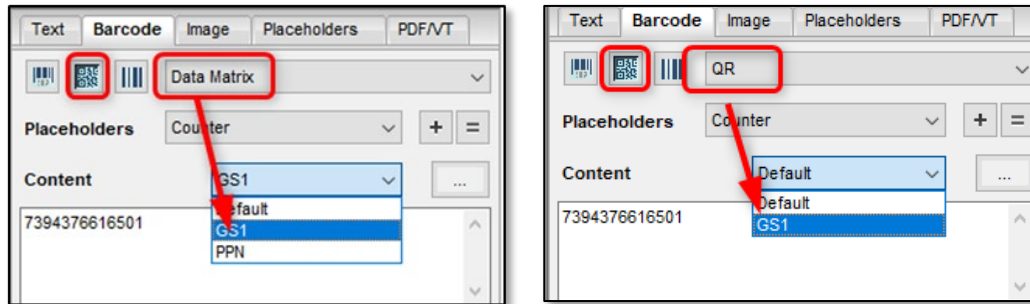


New: Support of GS1 in QR- and Data Matrix



Motivation: Improvements for the production of pharmaceutical packaging.

The 3 dimensional codes „Datamatrix“ and „QR“ support the GS1 standard now as well as the 2-dimensional code „GS1-128“ already did in former versions.



→ What is a GS1 Code?

The GS1 QR code is a barcode with globally unique identification and digital information that allows consumers to access advanced product information from the Internet, for example on allergies or origin by a Scan App.

Barcode Editor - pharmaceutical packaging

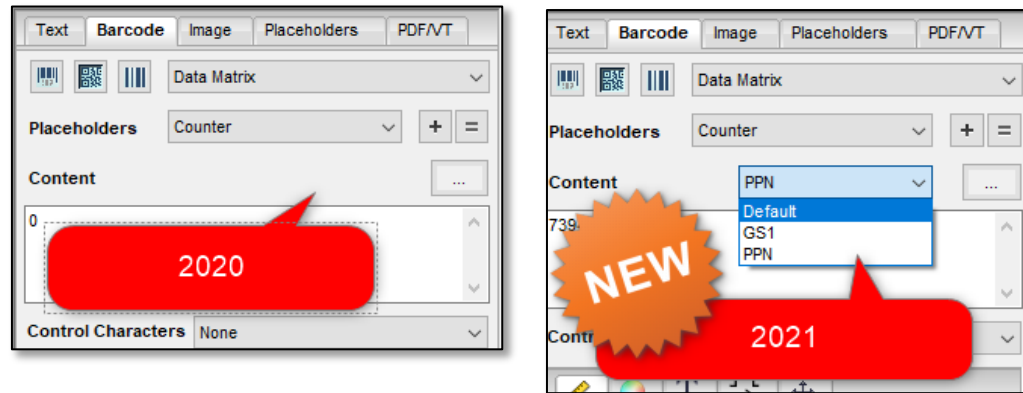


New: Support of PPN (Pharmacy Product Number) in Data Matrix Code



Motivation: Improvements for the production of pharmaceutical packaging.

PPN (pharmacy product Number, an identification code especially for pharmacy products) can be used now within a Data Matrix Code.



→ What is a PPN code?

The PPN Code (Pharmacy Product Number) is an identification code for pharmaceutical products. The PPN code is a 9-digit identification number with a globally unique product identifier



Barcode & VDP Editor – Working with variable data

New: Warning if a CSV is not reachable anymore

Motivation: Ease of use.

The path to the CSV file used is saved in VDP Editor.

Now a warning occurs when a PDF file is opened and the assigned CSV file is no longer reachable.

The screenshot shows a configuration panel for a counter with the following settings:

Type	Counter
No. Digits	0
Start Value	1
Increment	1
Delimiter	None

Below the configuration panel is a "New" button. A warning message is displayed at the bottom of the window:

File access error <C:\Users\HANSENSY\Desktop\PDFTBX2021\adressen_3000-BMCard.csv>
Placeholder file <C:\Users\HANSENSY\Desktop\PDFTBX2021\adressen_3000-BMCard.csv> is missing.

A red "NEW" badge is located in the bottom right corner of the warning area.

Barcode & VDP Editor – Working with variable data

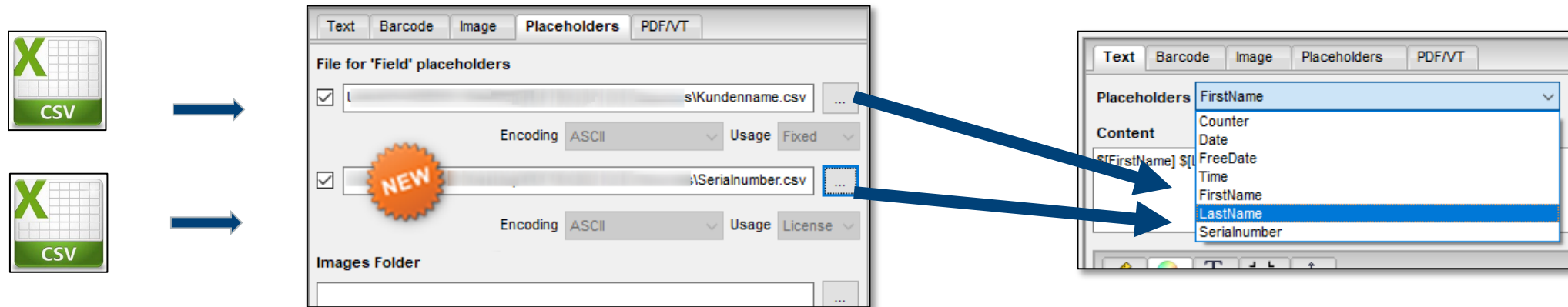


New: Support of two data sources



Motivation: Improvement for mixing multiple data sources for personalized pharmaceutical packaging

Mixing multiple data sources on one sheet is required for personalized pharmaceutical packaging. For example, in the case of personalized pharmaceutical packaging, the customer names are to be specified in a data source 1 and the serial numbers in a data source 2.



- Usage" is enabled in an iVDP workflow with a selected configuration. A distinction is made between "fixed" and "license". "Fixed" is the currently implemented mode for variable data printing. In this mode, the mapping of the data is determined by the page number of the page. This means that in the case of a job based on only one layout with variable data and e.g. by a target run specified by a CSV file, e.g. the 5th page of a WorkflowJob is always printed based on the same data regardless of how often it is generated or printed.
- LICENSE: if this mode is set on a data source, each time a variable element is created that is based on that data source, a new data set is used for generation and it is ensured that the same data is NEVER used

Not tested

Barcode & VDP Editor - variable Data

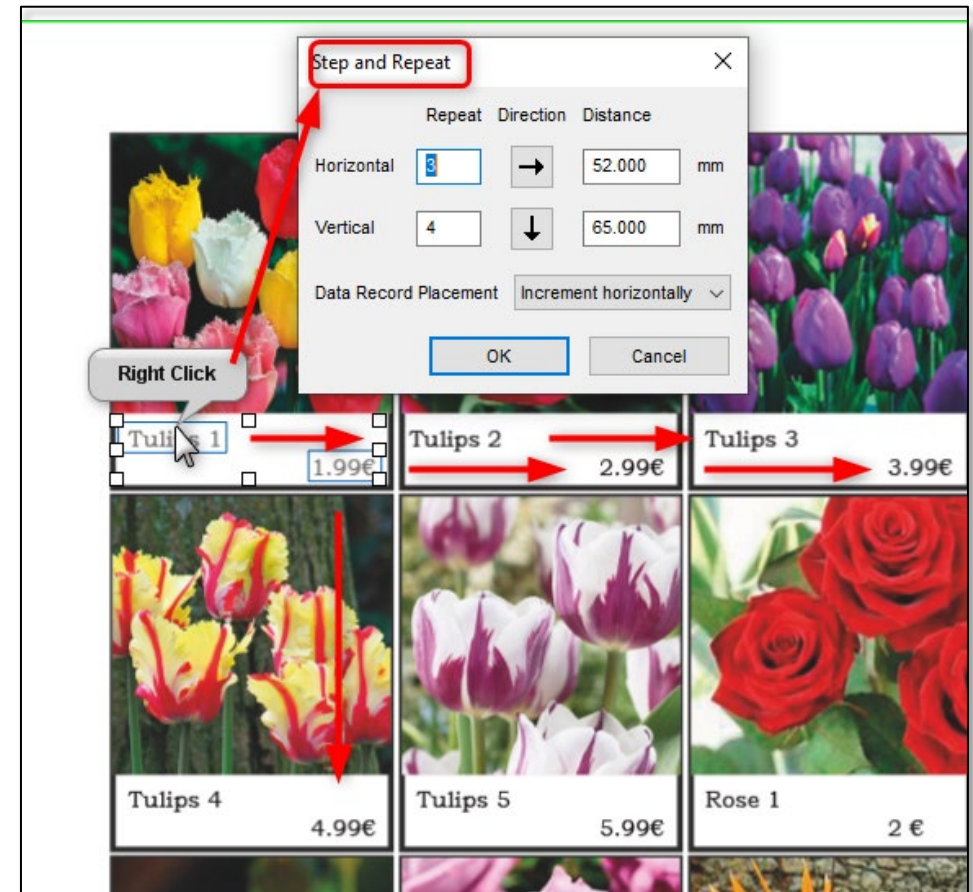


New: Step & Repeat for text and barcode placeholders

Motivation: Wanted feature

Dynamic marks for text, barcodes or images can be repeated now horizontally and vertically in a predefined distance and filled with data from the CSV file accordingly.

[See tutorial video](#)





Barcode & VDP Editor – variable data in different languages

New: “Check” if the characters from CSV can be represented with the character set chosen


Motivation: Improvement for customers working with country specific character sets.

A CSV file can contain different languages that often cannot be covered with a single character set.
Nonexistent characters are represented as "???".

In the "PDF/VT" tab, it is now checked whether the selected *character set* can represent all the special letters of the languages.

Mind:

This check cannot verify that the *font* you choose supports the specific letters of each language—use the Preflighter. (see slide 26)
This check of the VDP Editor is not yet available in the cockpit.

-  → A *character set* is a *collection of characters* for e.g. multiple languages.
- A *font* is a *graphical representation of text* that includes different typefaces, point sizes, weight, color, or design.

Barcode & VDP Editor - variable data in different languages



Example:

- You have a CSV file with the different languages German, Russian, Greek and Turkish. These languages have specific special characters
- Place the data from the CSV file in the VDP editor
- Click "Check" in tab "PDF/VT".
You receive an error message if the selected character set cannot represent the different languages.

	A	B	C	D	E
1	First Name	Last Name	Country		
2	Özdem	Häußler	Germany		
3	Иванов	Кузнецов	Russia		
4	Φλωρος	χλωρος	Greek		
5	Cânân	Öztürk	Turkey		
6					



Princt PDF Toolbox 2021 - Barcode & VDP Editor

File for 'field' placeholders: C:\Users\HANSENSY\Desktop\PDFTBX2021\Multi.csv

First Data Record: 1
Last Data Record: 4
Maximum per File: 4

Data Record Preview
 Cut and Stack
 Open results in Acrobat

ID	Replacement
1	Özdem
2	Häußler
3	Germany

Character set does not match text

- 2 - Иванов Кузнецов Russia
- 3 - Φλωρος χλωρος Greek

Longest Replacers

- 2 - Иванов Кузнецов Russia



Barcode & VDP Editor - variable data in different languages

New: Character set “Automatic” chooses best suitable character set out of the languages: Western Europe, Eastern Europe, Cyrillic, Turkish, Greek and Baltic.

Motivation: Improvement for customers working with country specific character sets.

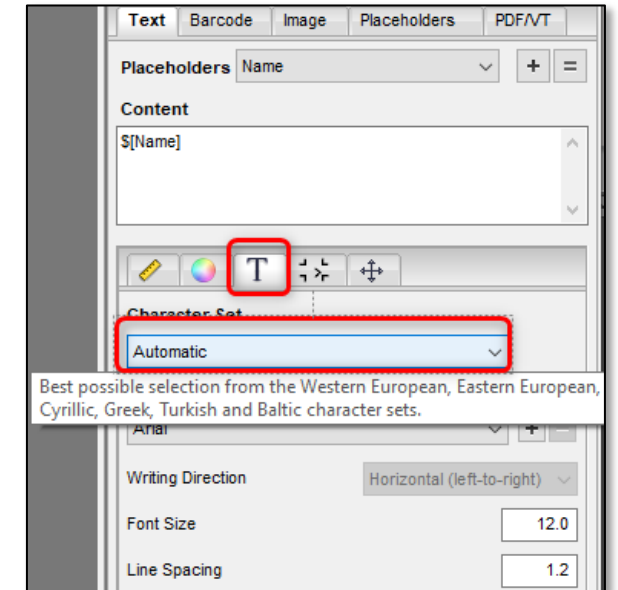
For customers using 1 byte languages in the CSV, PDF Toolbox 2021 now has an “Automatic” character set that selects the most appropriate character set suitable for all used languages. Non-existent characters are known to be represented as "???".

If necessary, you can switch the character set from record to record.

Mind: Again, it is not possible to check whether the selected *font* contains the language letters of the individual languages. This can be checked by preflight (slide 26)



- Unicode is available only if the ArialUnicodeMS font is installed on the system (\$Lizenz). Microsoft has stopped maintaining and updating Arial Unicode. "Unicode" is no longer installed with the Office Package.
- The “Automatic” character set is only possible for 1-byte character sets. Excluded are 2byte fonts such as Arabic, Chinese, Hebrew, etc.



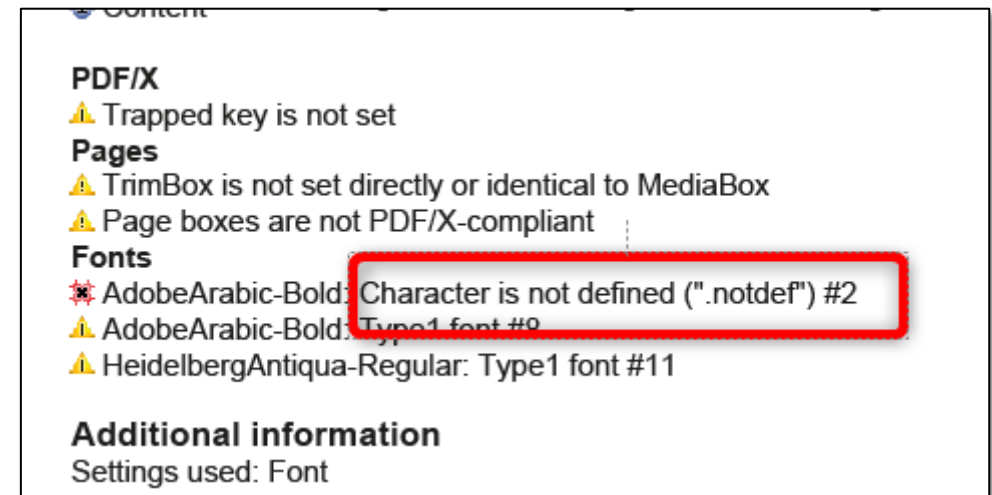
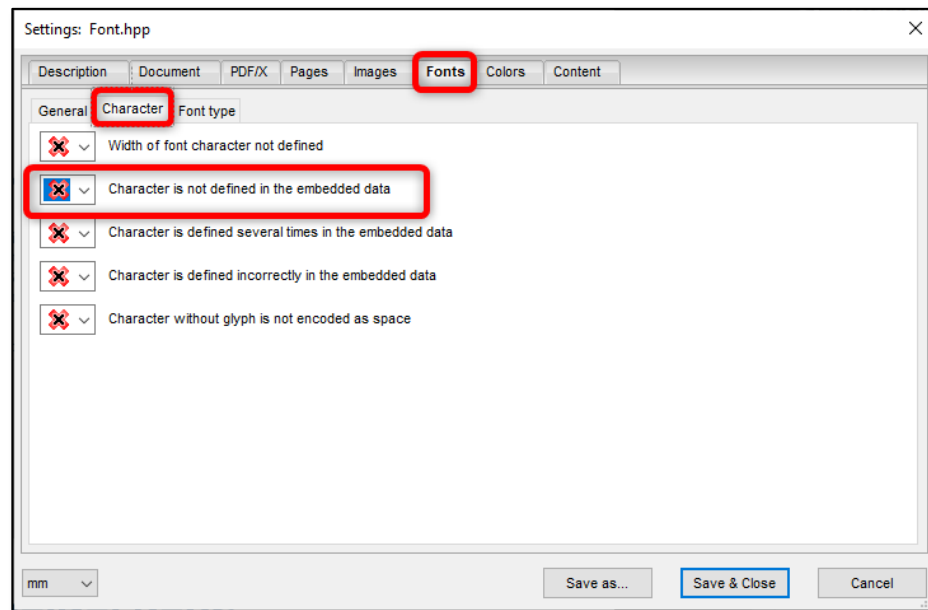
Barcode & VDP Editor - variable data in different languages



Mind:

It cannot be verified if the chosen *font* is supporting the language letters.

But you can write a Preflight Report with the following check to verify if all used characters are available in the font. If the font is not supporting the used characters you will get a warning/error:





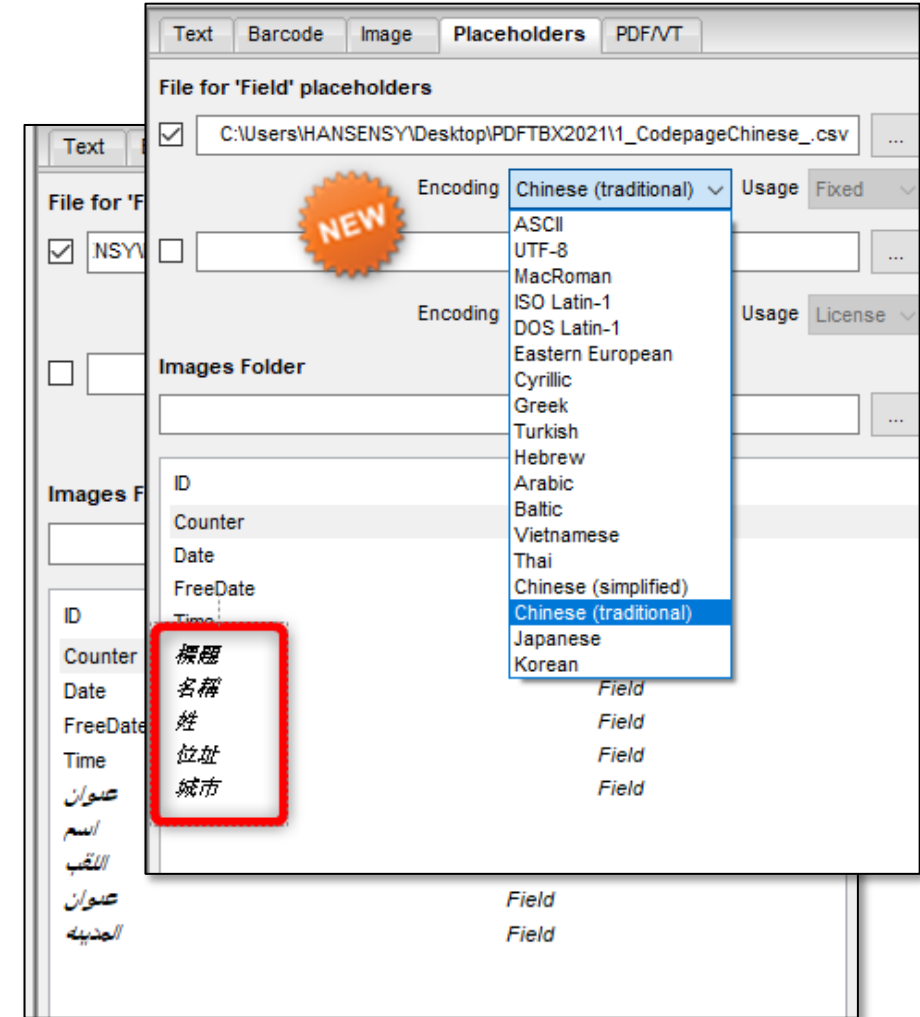
Barcode & VDP Editor - variable data in different languages

New: see placeholders of a CSV file in foreign language

Motivation: Improvement for working in foreign languages.

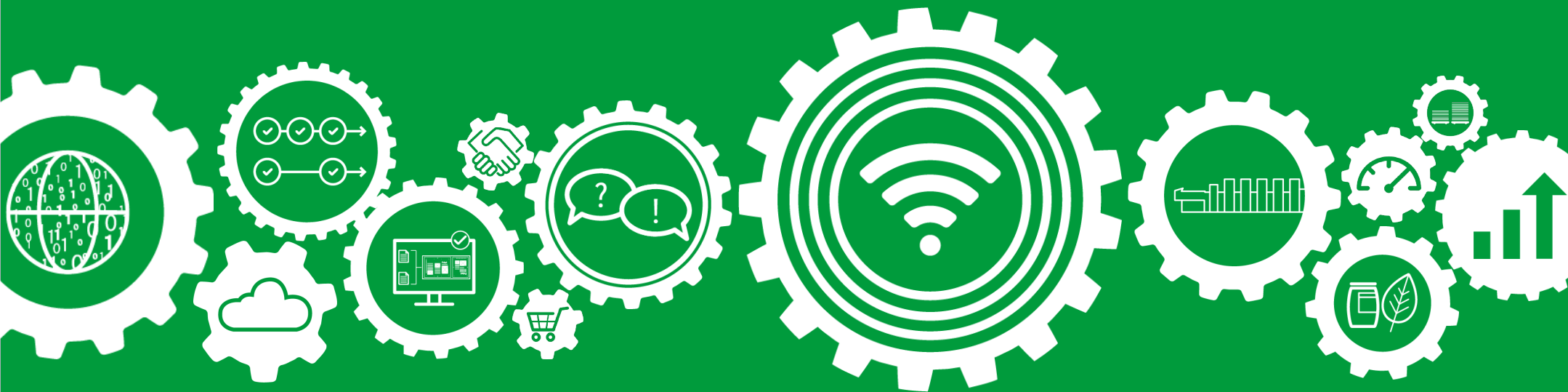
Previously, CSV files for the barcode editor required UTF-8 encoding.
Now you can also work with ANSI encoded character sets and choose the language for the a code page to see the dynamic placeholders now in the native language.
See supported languages in drop down menu in tab “placeholders”:

 → “IVDP” is **not** supported, checkbox must be disabled





What's new? – PDF Compare





PDF Compare

New: Report shows Colors



Motivation: Information about the used colors in PDF

In the Compare Report you see now the used colors of the compared PDF:



HEIDELBERG

[1] C:\Users\HANSENSY\Desktop\PDFTBX2021\9.1_PDFCompare_Trimbox1.pdf - 1
[2] C:\Users\HANSENSY\Desktop\PDFTBX2021\9.1_PDFCompare_Trimbox2.pdf - 1

[1] CMYK - Creasing-Rillen - DieForm-Stanze - Pan7686C
[2] CMYK - Creasing-Rillen - DieForm-Stanze - Pan7686C - ProofColor

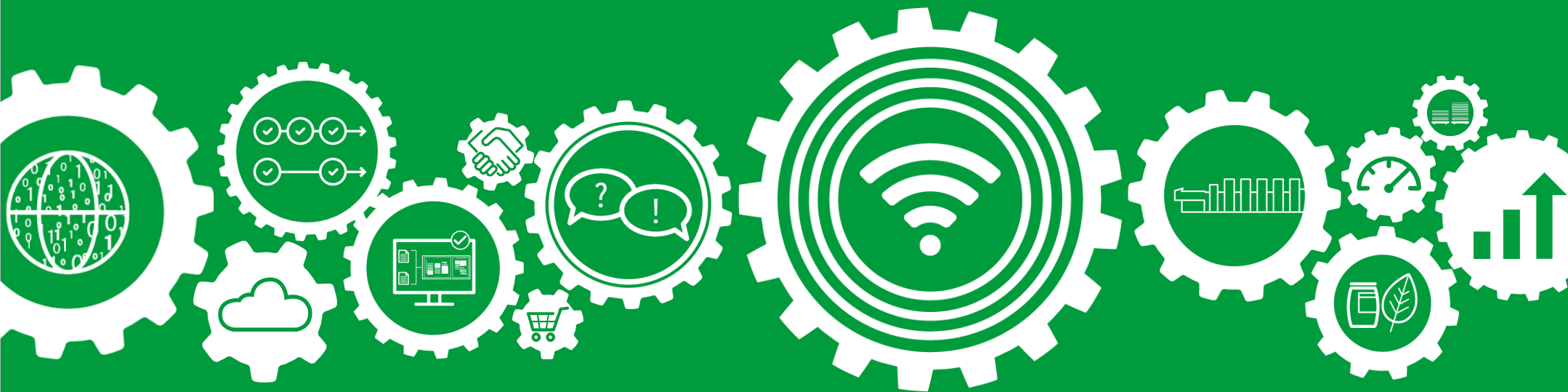
Resolution: 150.0 dpi - Compare within: TrimBox - Medium verification accuracy

NEW

[1] 236.08 x 272.58 mm 	[2] 215.50 x 252.00 mm 	Errors: 0 Warnings: 0
---	--	-----------------------



What's new? – Assemble Documents



Assemble Documents



New: Double or single sided layout globally selectable
This information is passed to DPM to verify that the selected layout is valid.



Not tested in DPM

Motivation

Improvement of feature

If Double-Sided (Default):

- Automatically: Default number of pages in chapter is *even*
- Automatically: Empty back are inserted if a chapters is set to single-sided

If Single-Sided:

- Automatically: Default number of pages in chapter is *odd*
- Automatically: Column “Double Sided” is hidden (no empty back pages)

File name	Pages	Format	Selection	Region	Double-sided	Even	Separator sheet	Text (Register)	Blank pages	Insert	Paper
Chapter3.pdf	11	210 x 297 mm	All	1-11	yes	yes	no		0	0	1 - Default
Chapter4.pdf	7	210 x 297 mm	All	1-7	yes	yes	no		0	0	1 - Default
Chapter5.pdf	21	210 x 297 mm	All	1-21	yes	yes	no		0	0	1 - Default
Chapter6.pdf	10	210 x 297 mm	All	1-10	yes	yes	no		0	0	1 - Default
Chapter7.pdf	12	210 x 297 mm	All	1-12	yes	yes	no		0	0	1 - Default
Chapter8.pdf	11	210 x 297 mm	All	1-11	yes	yes	no		0	0	1 - Default

O:\Style1 PDFs\PDFToolbo ... mm Delete Add... Layout NEW

File name	Pages	Format	Selection	Region	Even	Separator sheet	Text (Register)	Blank pages	Insert	Paper
Chapter3.pdf	11	210 x 297 mm	All	1-11	no	no		0	0	1 - Default
Chapter4.pdf	7	210 x 297 mm	All	1-7	no	no		0	0	1 - Default
Chapter5.pdf	21	210 x 297 mm	All	1-21	no	no		0	0	1 - Default
Chapter6.pdf	10	210 x 297 mm	All	1-10	no	no		0	0	1 - Default
Chapter7.pdf	12	210 x 297 mm	All	1-12	no	no		0	0	1 - Default
Chapter8.pdf	11	210 x 297 mm	All	1-11	no	no		0	0	1 - Default

O:\Style1 PDFs\PDFToolbo ... mm Delete Add... Layout Paper...



Assemble Documents

New: Assign paper type to register sheets
This information is passed to DPM to choose appropriate material



Not tested in DPM

Motivation: Ease of use. All register sheets have the same paper type after selecting just one.

→ Select paper type for a register in a certain chapter and automatically this is used for all register sheets

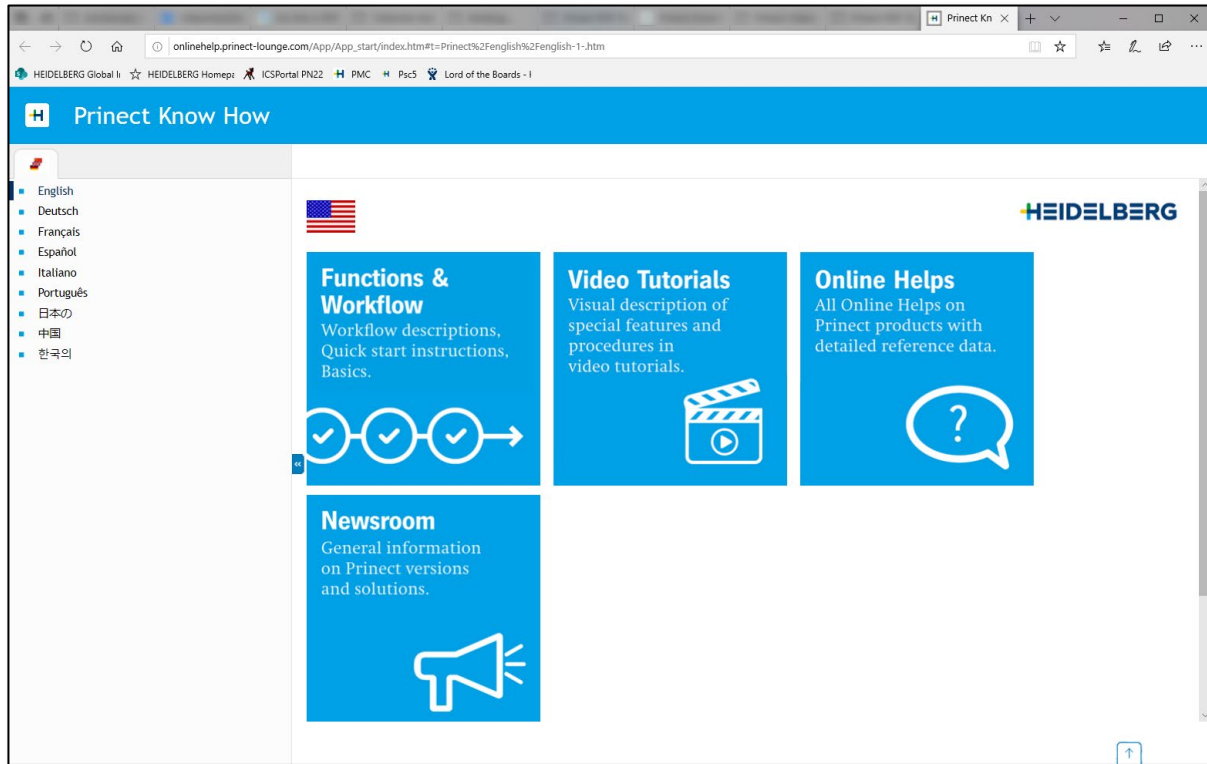
The screenshot shows the PDF Toolbox interface. On the left, a 'Right Click' context menu is open over a document page, with the 'Paper' option highlighted. The menu lists various paper types, with '11 - Paper for Insert' selected. A large blue arrow points from this menu to the right-hand screenshot. The right-hand screenshot shows the 'Chapter2.pdf #4' document with page 21 highlighted. Below the document preview is a table with the following data:

Selection	Region	Double-sided	Even	Separator sheet	Text (Register)	Blank pages	Insert	Paper
mm All	1-6	yes	yes	no		0	0	1 - Default
mm All	1-14	yes	yes	Index Sheet		0	0	Type 1,11
mm All	1-3	yes	yes	Index Sheet		0	0	Type 1,11
mm All	1-11	yes	yes	Index Sheet		0	0	Type 1,11
mm All	1-7	yes	yes	Index Sheet		0	0	Type 1,11
mm All	1-21	yes	yes	Index Sheet		0	0	Type 1,11



3. Help & Tutorials

Hit  or “Help” -> Plug_in Help for Online Help and click to “Prinect Know How”:



© 2020, Heidelberger Druckmaschinen AG. All rights reserved.